



Unexpected Friendships

KEYS to KINDNESS



It's okay to be different than other people. To be unique, in fact, that's awesome, to be unique to yourself. I hope that kids watching [Lyle, Lyle, Crocodile] realize that they should be confident in themselves... and that they're able to love themselves.

- Winslow Fegley, 13-year-old actor who plays Josh Primm in *Lyle, Lyle, Crocodile*



RESPOND to the personal kindness qualities that you observe in Lyle the crocodile and his close friend Josh Primm by identifying similar characteristics in yourself. Write words that describe what makes you a unique friend, focusing on your personal kindness qualities. Include aspects of your personality that others may not be aware of. Bring the inner you into view on this T-shirt.

WRITE WORDS THAT DESCRIBE YOUR PERSONAL KINDNESS QUALITIES THAT MAKE YOU UNIQUELY YOU!





Unexpected Friendships

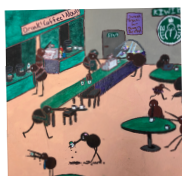
KEYS to KINDNESS

CREATE a sketch of yourself using your kindness superpowers to form a new friendship. Include a setting such as your street, school, or other place in your community. Illustrate how you befriend someone who becomes an unexpected friend. Consider the many ways people show kind behaviors before you decide what to draw. Show body language and facial expressions that radiate your kindness qualities. Include the newfound friend in the scene. It could be a person or animal. The situation could be realistic or imaginary. Will you be sharing food, helping someone with a challenge, creating collaborative art, making music together, playing a game or sport, solving a problem, shaking hands, or enjoying another special friendship moment?

ADD YOUR KINDNESS SKETCH TO THIS SCRAPBOOK.



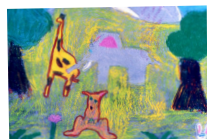
Kristin M.



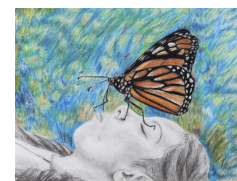
Christina B.



Heather R.



Jessica N.



Maria A.



Holly G.



Kedayton C.



PRESENT your T-shirt and scrapbook art to someone you do not know well—yet. Select someone who might become another unexpected friend. Discuss how new friendships begin when people look beyond the first impression and ignore assumptions that might be quickly made. Explain the list of personal qualities that make the inner you visible. Then describe your scrapbook sketch and how you decided what to draw.



CONNECT your unexpected friendship experience with your partner's. Ask this person what kindness qualities are within them and what helps them connect with new friends. What are some kindness qualities and experiences that you and this person have in common? How can unexpected friendships lead to new interests and potential future careers?

WHAT ARE SOME IDEAS YOU AND YOUR PARTNER SHARED DURING YOUR DISCUSSION?

Note for teachers and parents:

For more creative inspiration and hands-on explorations go to Crayola.com/CreativityWeek. To share student artwork on social media please post using [#CrayolaCreativityWeek](https://twitter.com/CrayolaCreativityWeek). We can't wait to see what they create.

Crayola Education

Turning Today's Interests
into Tomorrow's Careers
Thinking Sheet