



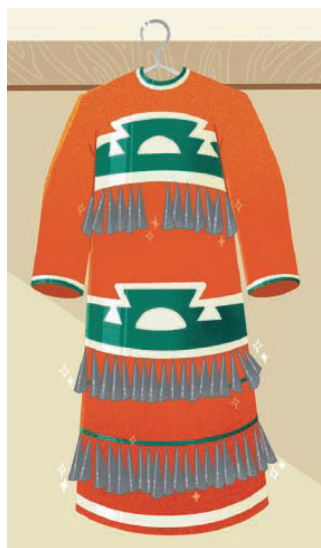
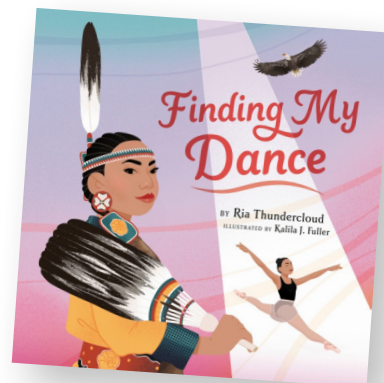
# Nature-Inspired Patterns

## DANCING WITH TRADITIONS



**CONNECT** the patterns used in Indigenous dance shawls and regalia with nature-inspired images. Indigenous dances and visual art are traditional works created by people who are native to a geographic region. They have deep connections to the landforms, plants, and animals in that area. Many Indigenous cultures emphasize harmony with nature. Their visual art as well

as their dances are inspired by nature. Every land around the world was originally populated by Indigenous people—each with unique folktales, dances, art styles, and traditions that are rooted in their environment, beliefs, and social structures.



Ria Thundercloud, the author of *Finding My Dance*, explains that her Indigenous communities include the Ho-Chunk Nation in Wisconsin and Sandia Pueblo in New Mexico. These tribes have different languages, cultures, and ceremonies, but both value dance. Ria's dance shawls and regalia include patterns found in the plants, birds, reptiles, mammals, and land formations found in those areas.



**RESPOND** to the images in *Finding My Dance* and your natural environment to sketch nature-inspired images. Look around outside. Research the plants, landscape, birds, and other animals that are common in your area. Ria's culture celebrates horses, eagles, and butterflies. What symbols are important to your culture and community?

SKETCH A FEW ITEMS FROM NATURE THAT ARE IMPORTANT TO YOUR CULTURE AND COMMUNITY.





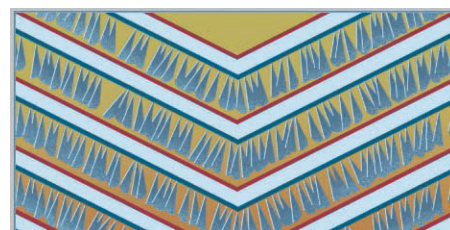
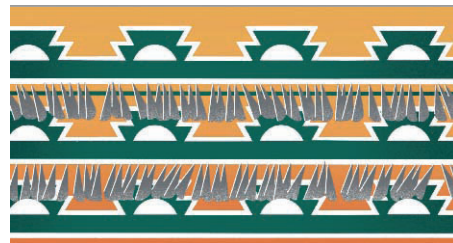
# Nature-Inspired Patterns

## DANCING WITH TRADITIONS

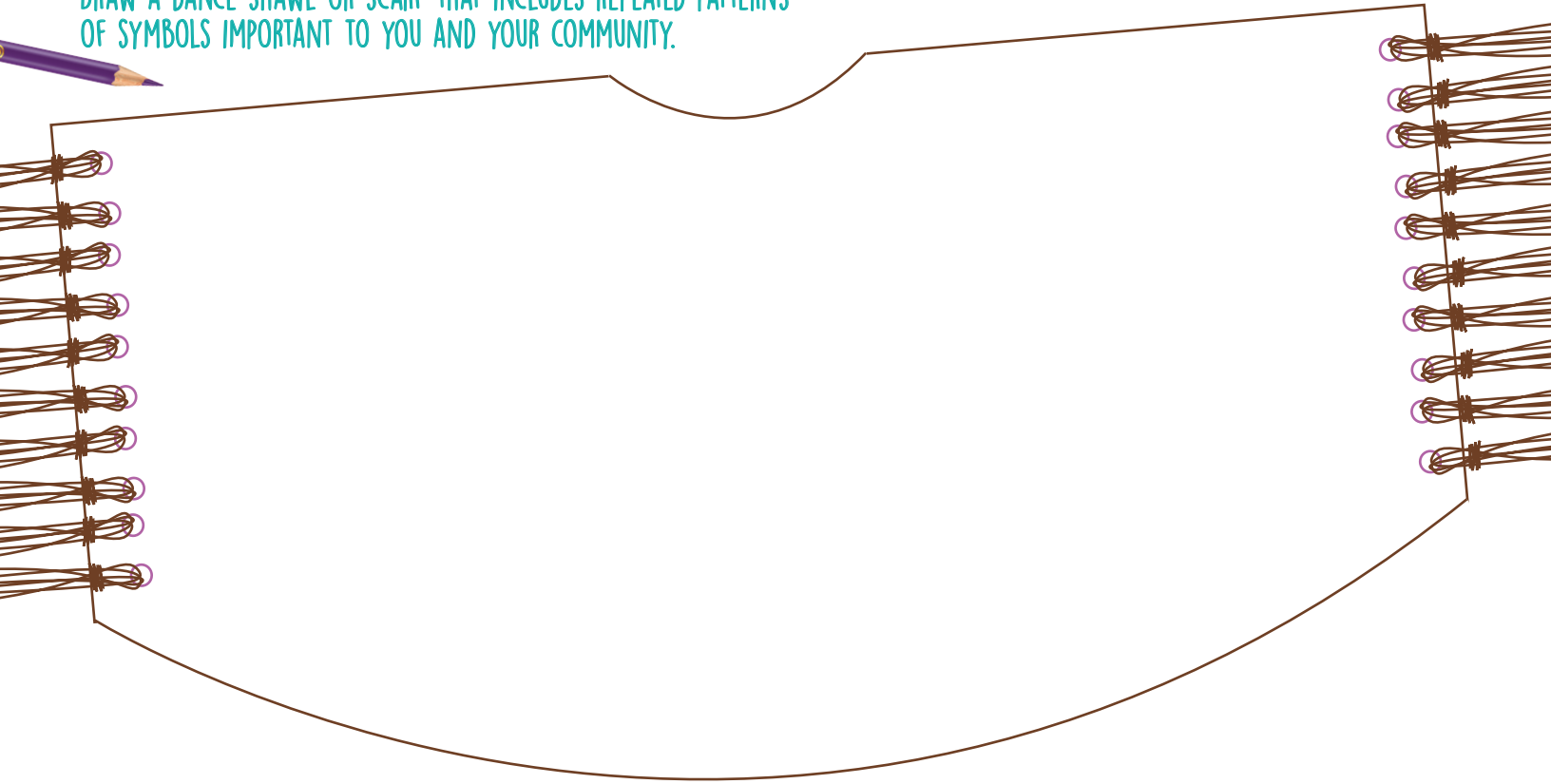


**CREATE** a dance shawl or scarf design that includes one or more of the symbols from your nature-inspired sketches. Notice how a pattern is formed when a symbol is repeated. This adds to the rhythmic qualities when the shawl is worn during a dance performance. Observe how the patterns in these images repeat feather, jingle, and setting sun symbols.

What symbols from your sketch boxes on the previous page could be repeated to create a pattern on a dance shawl or scarf you design? Which represent the interests of your family, culture, or community?



**DRAW A DANCE SHAWL OR SCARF THAT INCLUDES REPEATED PATTERNS OF SYMBOLS IMPORTANT TO YOU AND YOUR COMMUNITY.**



**PRESENT** your symbol sketches and shawl drawing. Display your art and join classmates in a gallery walk, exploring the similarities and differences in each piece of art. Take turns describing the natural inspiration for the design and what meaning the images have for you, your culture, or your community. If it is a plant or food that has been important to your ancestors, explain the role in family recipes or holiday traditions. If the pattern comes from an animal, explain the positive qualities that you value. If a weather symbol or landscape is featured, describe how this image pertains to the geography where your family came from originally or lives now. Enjoy celebrating your classmates' unique artwork as well as your own.

### Note for teachers and parents:

For more creative inspiration and hands-on explorations go to [Crayola.com/CreativityWeek](https://www.crayola.com/CreativityWeek)  
To share student artwork on social media please post using [#CrayolaCreativityWeek](https://twitter.com/CrayolaCreativityWeek)  
We can't wait to see what they create.



Turning Today's Interests  
into Tomorrow's Careers  
Thinking Sheet