

## 2 and 4 Station Workbenches with Doors, Drawers, Lockers or Shelves



4-Station Workbench with Lockers



2-Station Workbench with Drawers

### Features

- Solid maple top is 1 3/4" thick
- Locking units feature heavy-duty cam locks for security and include master key
- Panels are machined on state-of-the-art computer controlled equipment
- Precision machined dadoes and rabbets measured in micrometers
- All edges are shaped and sanded smooth, and exposed corners are rounded.
- Assembled with strong, durable wood glue and nails
- All shelves, dividers and back panel are dadoed in place for maximum strength and durability
- Doors use kitchen quality self-closing hinges and heavy-duty cam lock for security
- Includes 1/2" diameter steel chrome-plated floor glides along with front and rear toekicks for protection
- Components are finished with state-of-the-art equipment using environmentally-friendly, ultra-violet cured, clear acrylic. This finish is so hard and smooth it is virtually impervious to all common classroom disinfectants.

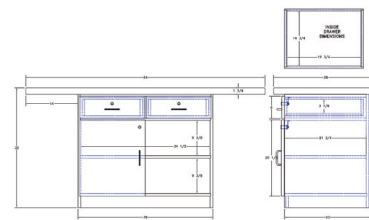
### Specifications

Model	Description	Width	Depth	Height
2 Station Workbench	With Doors or Drawers	64"	28"	32"
4 Station Workbench	With Doors, Drawers, Lockers or Shelves	64"	52"	32"

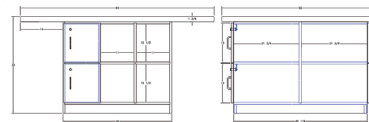


Mobile Storage

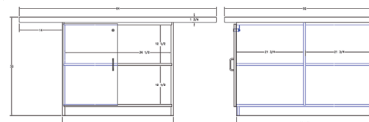
Environments that Inspire Learning



2-Station Workbench with Drawers



4-Station Workbench with Lockers



4-Station Workbench with Doors