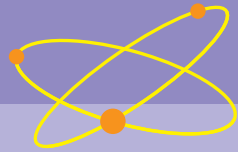
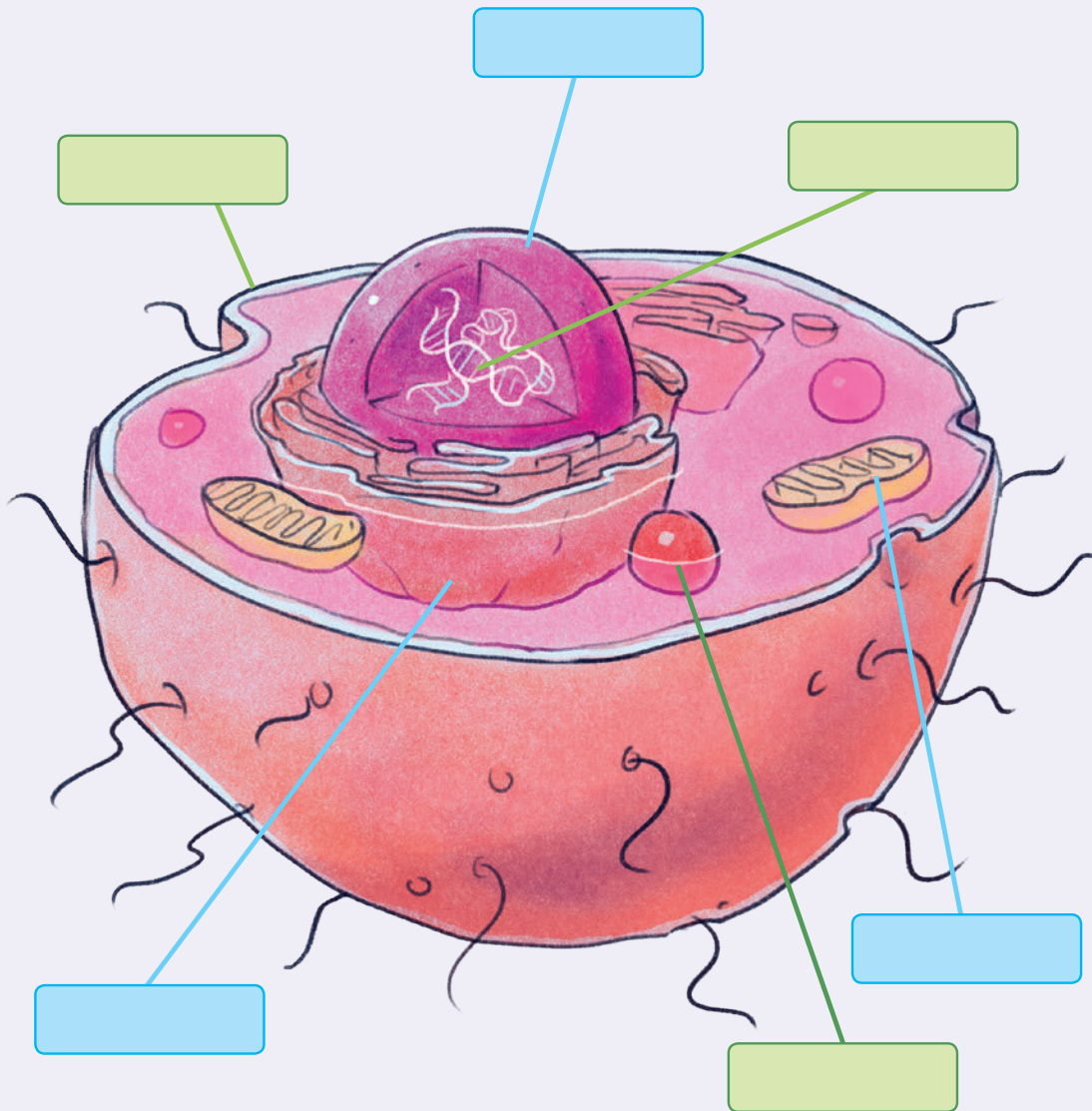


Cells

285



Using the clues, label the parts of the animal **cell**.



Brain Box

Cells are the building blocks of all living things. They have various functions. For instance, cells can make up muscles or an organ. Multiple cells that have the same function form **tissue**.

The **cell membrane** is the outer layer of the cell. It holds the cell together, but allows material to pass in and out.

In the middle of the cell, the **nucleus** controls the cell so that the cell carries out its function.

The nucleus contains **DNA**, which looks like a twisted ladder.

The **cytoplasm** lies between the cell membrane and the cell's nucleus.

The cytoplasm contains **mitochondria**, which produce chemical energy for the cell, and **vacuoles**, which store water and remove waste from the cell.

Cells