



Elmer's Recipe for Colored Slime

supplies needed

4 fl oz Elmer's White School Glue
½ tbsp. of baking soda
1 tbsp. of contact lens solution
Your choice of food coloring

instructions

1. Pour out the entire contents of a 4 fl oz of Elmer's School Glue into the bowl.
2. Add ½ tbsp. of baking soda and mix.
3. After mixing, add your choice of food coloring.
4. Mix and/or add more food coloring until you get the color you want.
5. Add 1 tbsp. of contact lens solution.
6. Mix until slime forms and it begins to get harder to mix.
7. Take the slime out and begin kneading with both of your hands.
8. If needed, add ¼ tbsp. contact lens solution to make the slime less sticky.

**Adult supervision is required; This project is not appropriate for children under the age of 3 years. Always wash your hands before and after making and playing with slime. Warning: If large quantities of contact lens solution are accidentally ingested (greater than a tablespoon), get medical attention immediately.*

***Some contact solution brands work better than others, check out our Slime Tips section for all the details.*





Elmer's Recipe for Large Colored Slime

supplies needed

7.625 fl oz Elmer's White School Glue
1 tbsp. of baking soda
2 tbsp. of contact lens solution
Your choice of food coloring

instructions

1. Pour out the entire contents of a 7.625 fl oz of Elmer's School Glue into the bowl.
2. Add 1 tbsp. of baking soda and mix.
3. After mixing, add your choice of food coloring.
4. Mix and/or add more food coloring until you get the color you want.
5. Add 2 tbsp. of contact lens solution.
6. Mix until slime forms and it begins to get harder to mix.
7. Take the slime out and begin kneading with both of your hands.
8. If needed, add ¼ tbsp. contact lens solution to make the slime less sticky.

**Adult supervision is required; This project is not appropriate for children under the age of 3 years. Always wash your hands before and after making and playing with slime. Warning: If large quantities of contact lens solution are accidentally ingested (greater than a tablespoon), get medical attention immediately.*

***Some contact solution brands work better than others, check out our Slime Tips section for all the details.*





Elmer's Recipe for Extra-Large Colored Slime

supplies needed

2 x 4 fl oz Elmer's White School Glue (8 fl oz)
1 tbsp. of baking soda
2 tbsp. of contact lens solution
Your choice of food coloring

instructions

1. Pour out the entire contents of both 4 fl oz of Elmer's School Glue into the bowl.
2. Add 1 tbsp. of baking soda and mix.
3. After mixing, add your choice of food coloring.
4. Mix and/or add more food coloring until you get the color you want.
5. Add 2 tbsp. of contact lens solution.
6. Mix until slime forms and it begins to get harder to mix.
7. Take the slime out and begin kneading with both of your hands.
8. If needed, add ¼ tbsp. contact lens solution to make the slime less sticky.

**Adult supervision is required; This project is not appropriate for children under the age of 3 years. Always wash your hands before and after making and playing with slime. Warning: If large quantities of contact lens solution are accidentally ingested (greater than a tablespoon), get medical attention immediately.*

***Some contact solution brands work better than others, check out our Slime Tips section for all the details.*





Elmer's Recipe for Jumbo Colored Slime

supplies needed

3 x 4 fl oz Elmer's White School Glue (12 fl oz)

1½ tbsp. of baking soda

3 tbsp. of contact lens solution

Your choice of food coloring

instructions

1. Pour out the entire contents of all three of the 4oz of Elmer's School Glue into the bowl.
2. Add 1½ tbsp. of baking soda and mix.
3. After mixing, add your choice of food coloring.
4. Mix and/or add more food coloring until you get the color you want.
5. Add 3 tbsp. of contact lens solution.
6. Mix until slime forms and it begins to get harder to mix.
7. Take the Slime out and begin kneading with both of your hands.
8. If needed, add ¼ tbsp. contact solution to make the slime less sticky.

**Adult supervision is required; This project is not appropriate for children under the age of 3 years. Always wash your hands before and after making and playing with slime. Warning: If large quantities of contact lens solution are accidentally ingested (greater than a tablespoon), get medical attention immediately.*

***Some contact solution brands work better than others, check out our Slime Tips section for all the details.*





Elmer's Recipe for Cloudy Cotton Slime

supplies needed

4 fl oz Elmer's White School Glue
½ tbsp. of baking soda
1 tbsp. of contact lens solution
Cotton balls

instructions

1. Pour out one bottle of Elmer's White School Glue into a container.
2. Add ½ tbsp. of baking soda and mix thoroughly.
3. Add 1 tbsp. of contact solution.
4. Mix until mixture gets harder and slime begins to form.
5. Take the slime out and begin kneading with both of your hands.
6. If needed, add ¼ tbsp. of contact solution to make the slime less sticky and set aside.
7. Pull apart cotton balls until they are fluffy and stuff it into your slime.
8. Keep adding cotton until desired look and feel of cotton/cloud slime.

**Adult supervision is required; This project is not appropriate for children under the age of 3 years. Always wash your hands before and after making and playing with slime. Warning: If large quantities of contact lens solution are accidentally ingested (greater than a tablespoon), get medical attention immediately.*

***Some contact solution brands work better than others, check out our Slime Tips section for all the details.*

For more kid-friendly recipes visit www.elmers.com/slime





Elmer's Recipe for Pastel Swirl Slime

supplies needed

4 x 4 fl oz Elmer's White School Glue

4 x ½ tbsp. of baking soda

4 x 1 tbsp. of contact lens solution

Your choice of 4 different pastel color food coloring

Glitter (optional)

ingredients

1. Pour out an entire bottle of Elmer's White School Glue into a container.
2. Add the first pastel color food coloring and mix until desired color.
3. Add ½ tbsp. of baking soda and mix thoroughly.
4. Add 1 tbsp. of contact lens solution.
5. Mix until slime forms and it begins to get harder to mix.
6. Take the slime out and begin kneading with both of your hands.
7. If needed, add ¼ tbsp. contact lens solution to make the slime less sticky, set aside.
8. For each of the remaining pastel colors, repeat steps 1-7.
9. Once all four colors are created, lay all colors side by side and swirl to make your magical pastel slime swirl. If you knead too much, the colors will eventually mix and become one color.

**Adult supervision is required; This project is not appropriate for children under the age of 3 years. Always wash your hands before and after making and playing with slime. Warning: If large quantities of contact lens solution are accidentally ingested (greater than a tablespoon), get medical attention immediately.*

***Some contact solution brands work better than others, check out our Slime Tips section for all the details.*

For more kid-friendly recipes visit www.elmers.com/slime





Elmer's Recipe for Rainbow Slime

supplies needed

5 x 4 fl oz Elmer's White School Glue
5 x ½ tbsp. of baking soda
5 x 1 tbsp. of contact lens solution
Food coloring
Glitter

instructions

1. Pour out an entire bottle of Elmer's White School Glue into a container.
2. Add red food coloring and mix until desired color.
3. Add red glitter and mix.
4. Add ½ tbsp. of baking soda and mix thoroughly.
5. Add 1 tbsp. of contact solution.
6. Mix until mixture gets harder and slime begins to form.
7. Take the slime out and begin kneading with both of your hands.
8. If needed, add ¼ tbsp. of contact solution to make the slime less sticky. Set aside.
9. For each of the remaining colors of the rainbow (orange, yellow, green, blue and purple), repeat steps 1-8.
Note: To make purple, mix blue and red food coloring. To make orange, mix red and yellow food coloring.
10. Once all six colors are created, lay all colors on top of each other, swirl and twist! If you knead too much, the colors will eventually mix and become one color.

**Adult supervision is required; This project is not appropriate for children under the age of 3 years. Always wash your hands before and after making and playing with slime. Warning: If large quantities of contact lens solution are accidentally ingested (greater than a tablespoon), get medical attention immediately.*

***Some contact solution brands work better than others, check out our Slime Tips section for all the details.*

For more kid-friendly recipes visit www.elmers.com/slime





Elmer's Recipe for Easter Slime

NEW

supplies needed

4 x 4 fl oz Elmer's White School Glue

4 x ½ tbsp.. of baking soda

4 x 1 tbsp.. of contact lens solution

Yellow, blue, purple, pink pastel food coloring

Various sized multi-color foam beads (optional)

ingredients

1. Pour out the entire contents of 4 fl oz Elmer's White School Glue into a container.
2. Add yellow pastel food coloring and mix until desired color.
3. Add ½ tbsp. of baking soda and mix thoroughly.
4. Add 1 tbsp. of contact lens solution.
5. Mix until slime forms and it begins to get harder to mix.
6. Take the slime out and begin kneading with both of your hands.
7. If needed, add ¼ tbsp. contact lens solution to make the slime less sticky, set aside.
8. Add in the colorful foam beads for a fun textured effect if desired.
9. For each of the remaining pastel colors, repeat steps 1-8.
10. Once all four colors are created, lay all colors on top of each other, swirl and twist! If you knead too much, the colors will eventually mix and become one.

**Adult supervision is required; This project is not appropriate for children under the age of 3 years. Always wash your hands before and after making and playing with slime. Warning: If large quantities of contact lens solution are accidentally ingested (greater than a tablespoon), get medical attention immediately.*

***Some contact solution brands work better than others, check out our Slime Tips section for all the details.*

For more kid-friendly recipes visit www.elmers.com/slime





Elmer's Recipe for Halloween Slime with Foam beads

supplies needed

4 fl oz Elmer's White School Glue
½ tbsp. of baking soda
1 tbsp. of contact lens solution
Orange food coloring
Black foam beads in small and large sizes

instructions

1. Pour out the entire contents of 4 fl oz Elmer's White School Glue into a container.
2. Add orange food coloring and mixed until desired color.
3. Add ½ tbsp. of baking soda and mix thoroughly.
4. Add 1 tbsp. of contact solution.
5. Mix until mixture gets harder and slime begins to form.
6. Take the slime out and begin kneading with both of your hands.
7. If needed, add ¼ tbsp. of contact solution to make the slime less sticky.
8. Add in black foam beads and mix.

**Adult supervision is required; This project is not appropriate for children under the age of 3 years. Always wash your hands before and after making and playing with slime. Warning: If large quantities of contact lens solution are accidentally ingested (greater than a tablespoon), get medical attention immediately.*

***Some contact solution brands work better than others, check out our Slime Tips section for all the details.*





Elmer's Recipe for Yellow Glitter Glue with Yellow Foam Beads Slime

NEW

supplies needed

4 fl oz Elmer's White School Glue
½ tbsp. of baking soda
1 tbsp. of contact lens solution
Yellow food coloring
Yellow and orange foam beads

instructions

1. Pour out the entire bottle of 4 fl oz Elmer's White School Glue into a container.
2. Add the yellow color food coloring and mix until desired color.
3. Add ½ tbsp. of baking soda and mix thoroughly.
4. Add 1 tbsp. of contact lens solution.
5. Mix until slime forms and it begins to get harder to mix.
6. Take the slime out and begin kneading with both of your hands.
7. If needed, add ¼ tbsp. contact lens solution to make the slime less sticky, set aside.
8. Add in the colorful foam beads for a fun textured effect.

**Adult supervision is required; This project is not appropriate for children under the age of 3 years. Always wash your hands before and after making and playing with slime. Warning: If large quantities of contact lens solution are accidentally ingested (greater than a tablespoon), get medical attention immediately.*

***Some contact solution brands work better than others, check out our Slime Tips section for all the details.*





Elmer's Recipe for Pink Slime with Foam Beads

NEW

supplies needed

4 fl oz Elmer's White School Glue

½ tbsp. of baking soda

1 tbsp. of contact lens solution

Red or pink food coloring

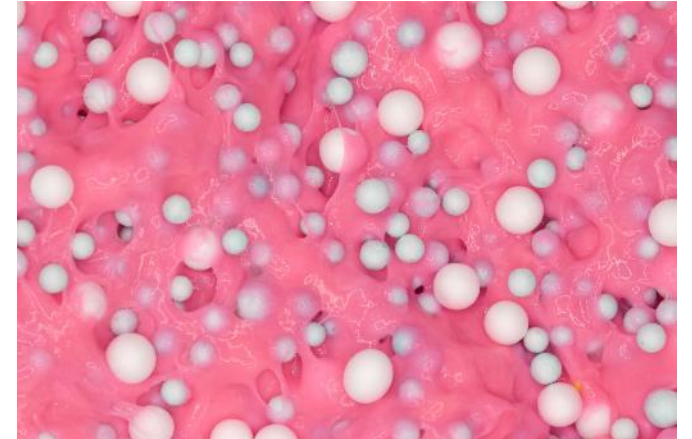
White and purple foam beads in various sizes

instructions

1. Pour out the entire bottle of 4 fl oz Elmer's White School Glue into a container.
2. Add the red or pink food coloring and mix until desired color.
3. Add ½ tbsp. of baking soda and mix thoroughly.
4. Add 1 tbsp. of contact lens solution.
5. Mix until slime forms and it begins to get harder to mix.
6. Take the slime out and begin kneading with both of your hands.
7. If needed, add ¼ tbsp. contact lens solution to make the slime less sticky, set aside.
8. Add in foam beads for a fun textured effect.

**Adult supervision is required; This project is not appropriate for children under the age of 3 years. Always wash your hands before and after making and playing with slime. Warning: If large quantities of contact lens solution are accidentally ingested (greater than a tablespoon), get medical attention immediately.*

***Some contact solution brands work better than others, check out our Slime Tips section for all the details.*





Elmer's Recipe for Birthday Foam Bead Slime

NEW

supplies needed

4 fl oz Elmer's White School Glue
½ tbsp. of baking soda
1 tbsp. of contact lens solution
Blue food coloring
Multi-colored foam beads

instructions

1. Pour out the entire contents of 4 fl oz Elmer's White School Glue into a container.
2. If desired, add any food coloring for a pop of color.
3. Add ½ tbsp. of baking soda and mix thoroughly.
4. Add 1 tbsp. of contact solution.
5. Mix until mixture gets harder and slime begins to form.
6. Take the slime out and begin kneading with both of your hands.
7. If needed, add ¼ tbsp. of contact solution to make the slime less sticky.
8. Add foam beads and mix.

**Adult supervision is required; This project is not appropriate for children under the age of 3 years. Always wash your hands before and after making and playing with slime. Warning: If large quantities of contact lens solution are accidentally ingested (greater than a tablespoon), get medical attention immediately.*

***Some contact solution brands work better than others, check out our Slime Tips section for all the details.*





Elmer's Recipe for Black and Orange Swirl Slime

supplies needed

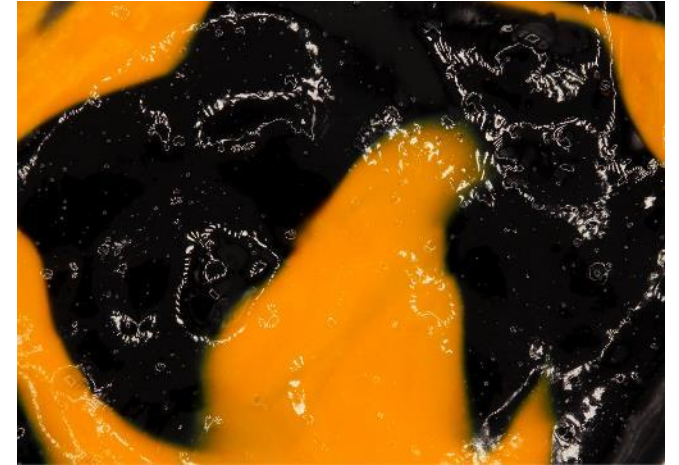
- 2 x 4 fl oz Elmer's White School Glue
- 2 x ½ tbsp. of baking soda
- 2 x 1 tbsp. of contact lens solution
- Black and orange food coloring

instructions

1. Pour out the entire contents of 4 fl oz Elmer's White School Glue into the bowl.
2. Add black food coloring and mix.
3. Add ½ tbsp. of baking soda and mix thoroughly.
4. Add 1 tbsp. of contact lens solution.
5. Mix until slime forms and it begins to get harder to mix.
6. Take the slime out and begin kneading with both of your hands.
7. If needed, add ¼ tbsp. contact lens solution to make the slime less sticky.
8. Repeat steps 1-7 to make orange color slime.
9. Twirl the orange and black slime together! **Note:** If you continue to twirl, the colors will eventually mix and become one.

**Adult supervision is required; This project is not appropriate for children under the age of 3 years. Always wash your hands before and after making and playing with slime. Warning: If large quantities of contact lens solution are accidentally ingested (greater than a tablespoon), get medical attention immediately.*

***Some contact solution brands work better than others, check out our Slime Tips section for all the details.*





Elmer's Recipe for Moon Rock Slime

NEW

supplies needed

4 fl oz Elmer's White School Glue

½ tbsp. of baking soda

1 tbsp. of contact lens solution

Black or grey food coloring (if using black, start with 1 drop)

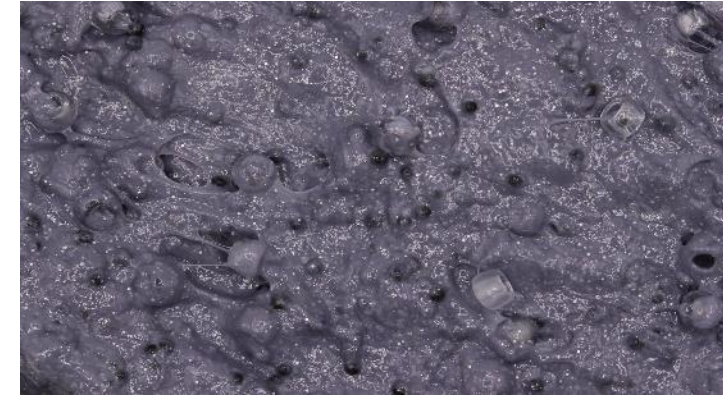
Clear pony beads

Instructions

1. Pour out the entire contents of 4 fl oz Elmer's White School Glue into a container.
2. Add grey or black food coloring and mix until desired grey color.
3. Add ½ tbsp. of baking soda and mix thoroughly.
4. Add 1 tbsp. of contact lens solution.
5. Mix until slime forms and it begins to get harder to mix.
6. Take the slime out and begin kneading with both of your hands.
7. If needed, add ¼ tbsp. contact lens solution to make the slime less sticky, set aside.
8. Add in clear pony beads into your slime for a fun textured effect.

**Adult supervision is required; This project is not appropriate for children under the age of 3 years. Always wash your hands before and after making and playing with slime. Warning: If large quantities of contact lens solution are accidentally ingested (greater than a tablespoon), get medical attention immediately.*

***Some contact solution brands work better than others, check out our Slime Tips section for all the details.*





Elmer's Recipe for Monochromatic Foam Bead Slime

NEW

supplies needed

4 fl oz Elmer's White School Glue

½ tbsp. of baking soda

1½ tbsp. of contact lens solution

Food coloring of your choice

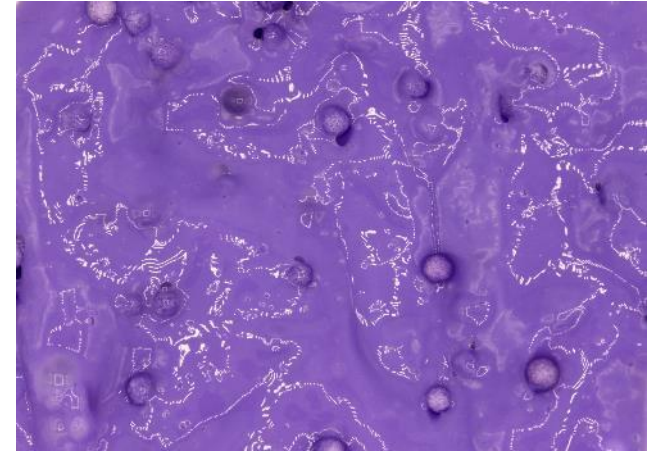
Small foam beads same color as food coloring

instructions

1. Pour out the entire contents of 4 fl oz Elmer's White School Glue into a container.
2. If desired, add food coloring of choice for a pop of color.
3. Add ½ tbsp. of baking soda and mix thoroughly.
4. Add 1 tbsp. of contact solution.
5. Mix until mixture gets harder and slime begins to form.
6. Take the slime out and begin kneading with both of your hands.
7. If needed, add ¼ tbsp. of contact solution to make the slime less sticky.
8. Add the foam beads and mix.

**Adult supervision is required; This project is not appropriate for children under the age of 3 years. Always wash your hands before and after making and playing with slime. Warning: If large quantities of contact lens solution are accidentally ingested (greater than a tablespoon), get medical attention immediately.*

***Some contact solution brands work better than others, check out our Slime Tips section for all the details.*





Elmer's Recipe for Custom Glitter Slime

supplies needed

5 fl oz Elmer's Clear School Glue

Your choice of Elmer's 0.356 fl oz glitter glue pens

½ tbsp. of baking soda

1 tbsp. of contact lens solution

instructions

1. Pour out the entire contents of a 5 fl oz of Elmer's Clear School Glue into the bowl.
2. Add ½ tbsp. of baking soda and mix thoroughly.
3. Add your choice of 0.356 fl oz Elmer's glitter glue pens and mix until desired color.
4. Add 1 tbsp. of contact lens solution.
5. Mix until slime forms, and it begins to get harder to mix.
6. Take the slime out and begin kneading with both of your hands.
7. If needed, add ¼ tbsp. contact lens solution to make the slime less sticky.

**Adult supervision is required; This project is not appropriate for children under the age of 3 years. Always wash your hands before and after making and playing with slime. Warning: If large quantities of contact lens solution are accidentally ingested (greater than a tablespoon), get medical attention immediately.*

***Some contact solution brands work better than others, check out our Slime Tips section for all the details.*





Elmer's Recipe for Galaxy Slime with Elmer's Glitter Glue Pens

supplies needed

3 x 5 fl oz Elmer's Clear School Glue

½ tbsp. of baking soda

3 tbsp. of contact lens solution

Two or more of each purple, blue, pink colored Elmer's 0.356 fl oz glitter glue pens

Red and blue food coloring

instructions

1. Find a three-different bowls, cups, or plates to mix your slime in.
2. Pour the entire contents of one 5 fl oz of Elmer's Clear School Glue into the three bowls, cups or plates.
3. For each bowl, add ½ tbsp. of baking soda and mix thoroughly.
4. For one of the bowls, add two or more of your pink Elmer's 0.356 fl oz glitter glue pens.
5. For another bowl, add one drop of the blue food coloring and blue Elmer's 0.356 fl oz glitter glue pens.
6. For the last bowl, add two drops of blue and red food coloring and purple Elmer's .356 fl oz glitter glue pens.
7. Mix contents of all three bowls thoroughly.
8. Add 1 tbsp. of contact lens solution to each bowl. Mix until slime forms, and it begins to get harder to mix.
9. Take each slime out, one at a time and begin kneading each with both of your hands.
10. If needed, add ¼ tbsp. contact lens solution to make the slime less sticky.
11. Once all three slimes are made, lay them on top of each other and begin to knead, twist and swirl! **Note:** If you continue to knead, the color will eventually mix and become one.

**Adult supervision is required; This project is not appropriate for children under the age of 3 years. Always wash your hands before and after making and playing with slime.*

Warning: If large quantities of contact lens solution are accidentally ingested (greater than a tablespoon), get medical attention immediately.

***Some contact solution brands work better than others, check out our Slime Tips section for all the details.*

For more kid-friendly recipes visit www.elmers.com/slime



Elmer's Recipe for Foam Bead Slime

supplies needed

5 fl oz Elmer's Clear School Glue

½ tbsp. of baking soda

1 tbsp. of contact lens solution

Combination of 0.356 Elmer's glitter glue pens (optional)

Multi-colored foam beads

instructions

1. Pour out one bottle of Elmer's Clear School Glue into a container.
2. If desired, add any 0.356 glue pens for a pop of color.
3. Add ½ tbsp. of baking soda and mix thoroughly.
4. Add 1 tbsp. of contact solution.
5. Mix until mixture gets harder and slime begins to form.
6. Take the slime out and begin kneading with both of your hands.
7. If needed, add ¼ tbsp. of contact solution to make the slime less sticky.
8. Add foam beads and mix into slime.

**Adult supervision is required; This project is not appropriate for children under the age of 3 years. Always wash your hands before and after making and playing with slime. Warning: If large quantities of contact lens solution are accidentally ingested (greater than a tablespoon), get medical attention immediately.*

***Some contact solution brands work better than others, check out our Slime Tips section for all the details.*





Elmer's Recipe for Sand Slime

supplies needed

5 fl oz Elmer's Clear School Glue
½ tbsp. of baking soda
1 tbsp. of contact lens solution
Play or craft sand

instructions

1. Pour out one bottle of Elmer's Clear School Glue into a container.
2. If desired, add any .356 glue pens for a pop of color.
3. Add ½ tbsp. of baking soda and mix thoroughly.
4. Add 1 tbsp. of contact solution.
5. Mix until mixture gets harder and slime begins to form.
6. Take the slime out and begin kneading with both of your hands.
7. If needed, add ¼ tbsp. of contact solution to make the slime less sticky.
8. Add sand and mix into slime.

**Adult supervision is required; This project is not appropriate for children under the age of 3 years. Always wash your hands before and after making and playing with slime. Warning: If large quantities of contact lens solution are accidentally ingested (greater than a tablespoon), get medical attention immediately.*

***Some contact solution brands work better than others, check out our Slime Tips section for all the details.*

For more kid-friendly recipes visit www.elmers.com/slime





Elmer's Recipe for Fish Tank Slime

supplies needed

5 fl oz Elmer's Clear School Glue
½ tbsp. of baking soda
1 tbsp. of contact lens solution
Blue Food Coloring
Clear Jar with Lid
Your choice of toy sea creatures

instructions

1. Pour out one bottle of Elmer's Clear School Glue into a container.
2. Begin with one drop of blue food coloring and mix. If needed, add more food coloring until desired blue color.
3. Add ½ tbsp. of baking soda and mix thoroughly.
4. Add 1 tbsp. of contact solution.
5. Mix until mixture gets harder and slime begins to form.
6. Take the slime out and begin kneading with both of your hands.
7. If needed, add ¼ tbsp. of contact solution to make the slime less sticky.
8. In a clear container, add ½ of the slime.
9. Place your sea creatures of choice and add the remaining slime on top of your creatures for an underwater look

**Adult supervision is required; This project is not appropriate for children under the age of 3 years. Always wash your hands before and after making and playing with slime. Warning: If large quantities of contact lens solution are accidentally ingested (greater than a tablespoon), get medical attention immediately.*

***Some contact solution brands work better than others, check out our Slime Tips section for all the details.*

For more kid-friendly recipes visit www.elmers.com/slime





Elmer's Recipe for Pearl Slime

supplies needed

5 fl oz Elmer's Clear School Glue

½ tbsp. of baking soda

1 tbsp. of contact lens solution

Any color of pearlescent loose make-up pigment

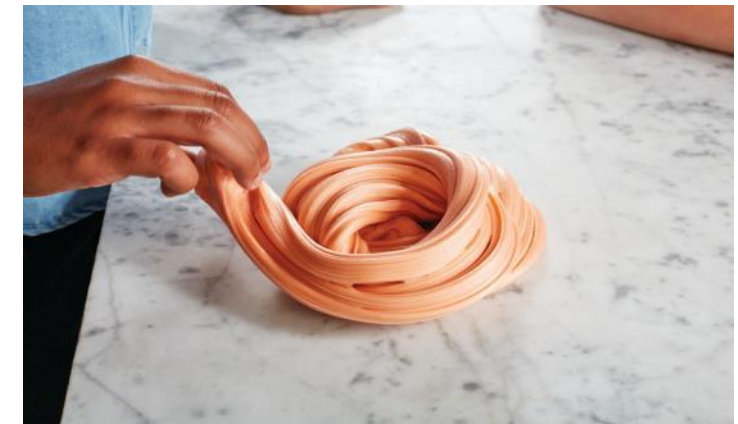
instructions

1. Pour out one bottle of your choice of Elmer's glue into a container.
2. Add ½ tbsp. of baking soda and mix thoroughly.
3. Add 1 tbsp. of contact solution.
4. Mix until mixture gets harder and slime begins to form.
5. Take the slime out and begin kneading with both of your hands.
6. If needed, add ¼ tbsp. of contact solution to make the slime less sticky.
7. Once slime is formed, add a small amount of pearlescent loose pigment into the center of the slime and knead. If needed, add more pearlescent pigment until desired color.

**Adult supervision is required; This project is not appropriate for children under the age of 3 years. Always wash your hands before and after making and playing with slime. Warning: If large quantities of contact lens solution are accidentally ingested (greater than a tablespoon), get medical attention immediately.*

***Some contact solution brands work better than others, check out our Slime Tips section for all the details.*

For more kid-friendly recipes visit www.elmers.com/slime





Elmer's Recipe for Space Slime

supplies needed

5 fl oz Elmer's Clear School Glue

½ tbsp. of baking soda

1 tbsp. of contact lens solution

Black food coloring

Silver and gold glitter

Space crafts and glow in the dark stars (optional)

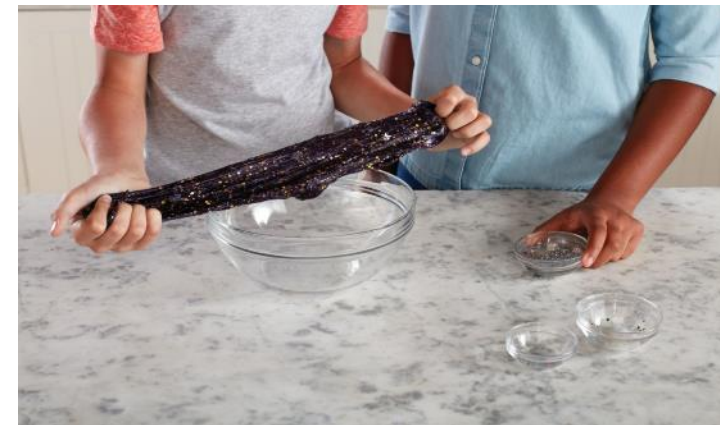
instructions

1. Pour out an entire bottle of Elmer's Clear School Glue into a container.
2. Add food coloring and mix until desired color.
3. Add silver and gold glitter or any other glitter color of choice and mix.
4. Add ½ tbsp. of baking soda and mix thoroughly.
5. Add 1 tbsp. of contact solution.
6. Mix until mixture gets harder and slime begins to form.
7. Take the slime out and begin kneading with both of your hands.
8. If needed, add ¼ tbsp. of contact solution to make the slime less sticky.
9. Add glow in the dark stars and any space crafts if desired.

**Adult supervision is required; This project is not appropriate for children under the age of 3 years. Always wash your hands before and after making and playing with slime. Warning: If large quantities of contact lens solution are accidentally ingested (greater than a tablespoon), get medical attention immediately.*

***Some contact solution brands work better than others, check out our Slime Tips section for all the details.*

For more kid-friendly recipes visit www.elmers.com/slime





Elmer's Recipe for Slime with Bugs

supplies needed

5 fl oz Elmer's Clear School Glue
½ tbsp. of baking soda
1 tbsp. of contact lens solution
Your choice of toy bug creatures
Food coloring (optional)

instructions

1. Pour out an entire bottle of Elmer's Clear School Glue into a container.
2. If desired, add food coloring of choice and mix until desired color.
3. Add ½ tbsp. of baking soda and mix thoroughly.
4. Add 1 tbsp. of contact solution.
5. Mix until mixture gets harder and slime begins to form.
6. Take the slime out and begin kneading with both of your hands.
7. If needed, add ¼ tbsp. of contact solution to make the slime less sticky.
8. Add your choice of bug creatures.

**Adult supervision is required; This project is not appropriate for children under the age of 3 years. Always wash your hands before and after making and playing with slime.
Warning: If large quantities of contact lens solution are accidentally ingested (greater than a tablespoon), get medical attention immediately.*

***Some contact solution brands work better than others, check out our Slime Tips section for all the details.*



Elmer's Recipe for Mud Slime

supplies needed

5 fl oz Elmer's Clear School Glue

½ tbsp. of baking soda

1 tbsp. of contact lens solution

Mud from the yard

Your choice of toy bug creatures (optional)

instructions

1. Pour out an entire bottle of Elmer's Clear School Glue into a container.
2. Add a few tbsp. of mud and mix.
3. Add ½ tbsp. of baking soda and mix thoroughly.
4. Add 1 tbsp. of contact lens solution.
5. Mix until mixture gets harder and slime begins to form.
6. Take the slime out and begin kneading and stretching with both of your hands.
7. If needed, add ¼ tbsp. of contact solution to make the slime less sticky.
8. Add your choice of toy bugs if desired.

**Adult supervision is required; This project is not appropriate for children under the age of 3 years. Always wash your hands before and after making and playing with slime. Warning: If large quantities of contact lens solution are accidentally ingested (greater than a tablespoon), get medical attention immediately.*

***Some contact solution brands work better than others, check out our Slime Tips section for all the details.*

For more kid-friendly recipes visit www.elmers.com/slime





Elmer's Recipe for Starry Night Slime

supplies needed

3 x 5 fl oz Elmer's Clear School Glue
½ tbsp. of baking soda
1 tbsp. of contact lens solution
Black, purple and blue food coloring
Glitter

instructions

1. Pour out an entire bottle of Elmer's Clear School Glue into a container.
2. Add black food coloring and mix.
3. Add glitter and mix until desired amount of sparkle.
4. Add ½ tbsp. of baking soda and mix thoroughly.
5. Add 1 tbsp. of contact lens solution.
6. Mix until slime forms and it begins to get harder to mix.
7. Take the slime out and begin kneading with both of your hands.
8. If needed, add ¼ tbsp. contact lens solution to make the slime less sticky. Set aside.
9. Repeat steps 1-8 two more times to make the remaining slime in purple and blue.
10. Once each slime has been created, lay all three colors together and swirl for a mesmerizing starry night slime.

**Adult supervision is required; This project is not appropriate for children under the age of 3 years. Always wash your hands before and after making and playing with slime. Warning: If large quantities of contact lens solution are accidentally ingested (greater than a tablespoon), get medical attention immediately.*

***Some contact solution brands work better than others, check out our Slime Tips section for all the details.*

For more kid-friendly recipes visit www.elmers.com/slime





Elmer's Recipe for Gold Slime

supplies needed

- 5 fl oz Elmer's Clear School Glue
- ½ tbsp. of baking soda
- 1 tbsp. of contact lens solution
- Metallic gold liquid watercolor paint

instructions

1. Pour out an entire bottle of Elmer's Clear School Glue into a container.
2. Mix in gold watercolor to the glue until desired color.
3. Add ½ tbsp. of baking soda and mix thoroughly.
4. Add 1 tbsp. of contact lens solution.
5. Mix until mixture gets harder and slime begins to form.
6. Take the slime out and begin kneading and stretching with both of your hands.
7. If needed, add ¼ tbsp. of contact solution to make the slime less sticky.

**Adult supervision is required; This project is not appropriate for children under the age of 3 years. Always wash your hands before and after making and playing with slime. Warning: If large quantities of contact lens solution are accidentally ingested (greater than a tablespoon), get medical attention immediately.*

***Some contact solution brands work better than others, check out our Slime Tips section for all the details.*

For more kid-friendly recipes visit www.elmers.com/slime





Elmer's Recipe for St. Patrick's Day Slime

NEW

supplies needed

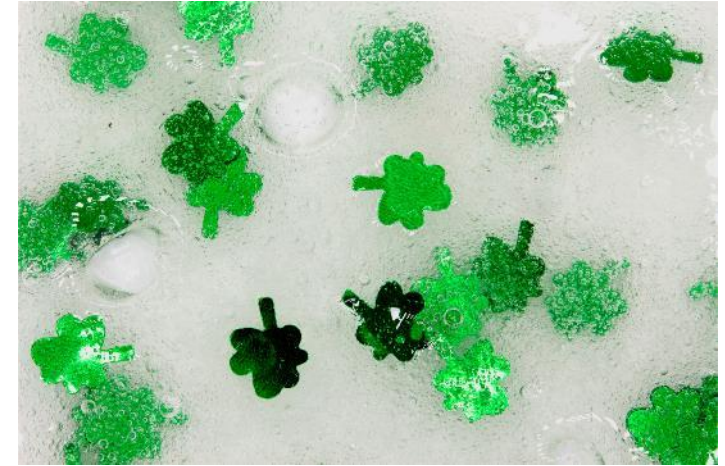
½ tbsp. of baking soda
1 tbsp. of contact lens solution
5 fl oz Elmer's Clear School Glue
Your choice shamrock confetti

instructions

1. Pour out entire contents of 5 oz Elmer's Clear School Glue into a container.
2. Add ½ tbsp. of baking soda and mix thoroughly.
3. Add 1 tbsp. of contact solution.
4. Mix until mixture gets harder and slime begins to form.
5. Take the slime out and begin kneading with both of your hands.
6. If needed, add ¼ tbsp. of contact solution to make the slime less sticky.
7. Add your choice of shamrock confetti

**Adult supervision is required; This project is not appropriate for children under the age of 3 years. Always wash your hands before and after making and playing with slime. Warning: If large quantities of contact lens solution are accidentally ingested (greater than a tablespoon), get medical attention immediately.*

***Some contact solution brands work better than others, check out our Slime Tips section for all the details.*





Elmer's Recipe for Gold Glitter Slime with Clear Beads

NEW

supplies needed

5 fl oz Elmer's Clear School Glue
0.356 fl oz Elmer's glitter glue pen in gold
½ tbsp. of baking soda
1 tbsp. of contact lens solution
Clear pony beads

instructions

1. Pour out the entire contents of 5 oz of Elmer's Clear Glue into the bowl.
2. Add entire contents of 0.356 oz of Elmer's gold glitter glue pen.
3. Add ½ tbsp. of baking soda and mix.
4. Add 1 tbsp. of contact lens solution.
5. Mix until slime forms and it begins to get harder to mix.
6. Take the slime out and begin kneading with both of your hands.
7. If needed, add ¼ tbsp. contact lens solution to make the slime less sticky.
8. Fold in clear pony beads to slime.

**Adult supervision is required; This project is not appropriate for children under the age of 3 years. Always wash your hands before and after making and playing with slime. Warning: If large quantities of contact lens solution are accidentally ingested (greater than a tablespoon), get medical attention immediately.*

***Some contact solution brands work better than others, check out our Slime Tips section for all the details.*





Elmer's Recipe for Kinetic Sand® Slime



supplies needed

5 fl oz Elmer's Clear School Glue
½ tbsp. of baking soda
1 tbsp. of contact lens solution
Kinetic sand®

instructions

1. Pour out the entire contents of 5 oz Elmer's Clear School Glue into a container.
2. Add ½ tbsp. of baking soda and mix thoroughly.
3. Add 1 tbsp. of contact solution.
4. Mix until mixture gets harder and slime begins to form.
5. Take the slime out and begin kneading with both of your hands.
6. If needed, add ¼ tbsp. of contact solution to make the slime less sticky.
7. Add Kinetic Sand® and knead into slime.

Kinetic Sand® is a registered trademark of Spin Master Ltd.

**Adult supervision is required; This project is not appropriate for children under the age of 3 years. Always wash your hands before and after making and playing with slime. Warning: If large quantities of contact lens solution are accidentally ingested (greater than a tablespoon), get medical attention immediately.*

***Some contact solution brands work better than others, check out our Slime Tips section for all the details.*





Elmer's Recipe for Halloween Glitter Slime

supplies needed

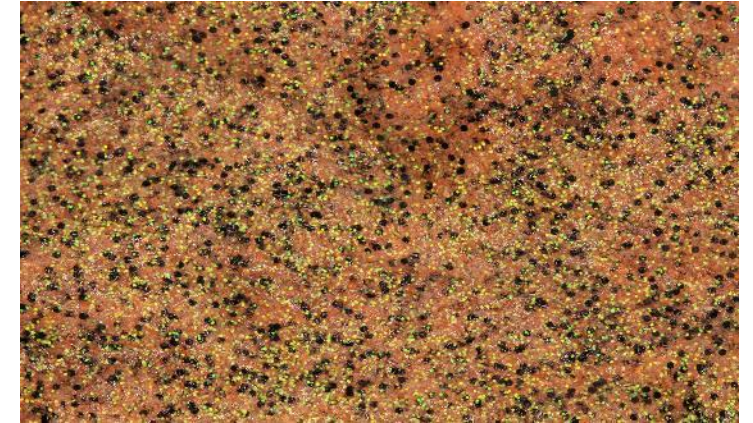
5 fl oz Elmer's Clear School Glue
½ tbsp. of baking soda
1 tbsp. of contact lens solution
Black, gold & orange glitter

instructions

1. Pour out the entire contents of 5 oz Elmer's Clear School Glue into a container.
2. Add desired amount glitter and mix until desired color.
3. Add ½ tbsp. of baking soda and mix thoroughly.
4. Add 1 tbsp. of contact solution..
5. Mix until mixture gets harder and slime begins to form.
6. Take the slime out and begin kneading with both of your hands.
7. If needed, add ¼ tbsp. of contact solution to make the slime less sticky.

**Adult supervision is required; This project is not appropriate for children under the age of 3 years. Always wash your hands before and after making and playing with slime. Warning: If large quantities of contact lens solution are accidentally ingested (greater than a tablespoon), get medical attention immediately.*

***Some contact solution brands work better than others, check out our Slime Tips section for all the details.*





Elmer's Recipe for Party Ball Slime

NEW

supplies needed

- 2 X 5 fl oz Elmer's Clear School Glue (10 fl oz total)
- 1 tbsp. of baking soda
- 2 tbsp. of contact lens solution
- Multi-colored confetti

instructions

1. Pour out the entire contents of two 5 fl oz of Elmer's Clear School Glue into the bowl.
2. Add 1 tbsp. of baking soda and mix thoroughly.
3. Add 2 tbsp. of contact lens solution.
4. Mix until slime forms and it begins to get harder to mix.
5. Take the slime out and begin kneading with both of your hands.
6. If needed, add ¼ tbsp. contact lens solution to make the slime less sticky.
7. Spread out slime and add confetti onto the slime. Fold the edges in and mix. Continue adding confetti until desired confetti slime is formed!

**Adult supervision is required; This project is not appropriate for children under the age of 3 years. Always wash your hands before and after making and playing with slime. Warning: If large quantities of contact lens solution are accidentally ingested (greater than a tablespoon), get medical attention immediately.*

***Some contact solution brands work better than others, check out our Slime Tips section for all the details.*





Elmer's Recipe for Glitter Slime

supplies needed

6 fl oz Elmer's Glitter Glue

½ tbsp. of baking soda

1¼ tbsp. of contact lens solution

instructions

1. Pour out the entire contents of a 6 fl oz of Elmer's Glitter Glue into the bowl.
2. Add ½ tbsp. of baking soda and mix thoroughly.
3. Add 1¼ tbsp. of contact lens solution.
4. Mix until slime forms and it begins to get harder to mix.
5. Take the slime out and begin kneading with both of your hands.
6. If needed, add ¼ tbsp. contact lens solution to make the slime less sticky.

**Adult supervision is required; This project is not appropriate for children under the age of 3 years. Always wash your hands before and after making and playing with slime. Warning: If large quantities of contact lens solution are accidentally ingested (greater than a tablespoon), get medical attention immediately.*

***Some contact solution brands work better than others, check out our Slime Tips section for all the details.*





Elmer's Recipe for Galaxy Slime using Elmer's Galaxy Slime Pack

supplies needed

- 3 X 6 fl oz Elmer's Glitter Glue (Blue, pink and purple)
- 3 X ½ tbsp. of baking soda
- 3 X 1¼ tbsp. of contact lens solution

instructions

1. Pour entire bottle of 6 fl oz Elmer's Blue Glitter Glue into the container.
2. Add ½ tbsp. of baking soda and mix thoroughly.
3. Add 1¼ tbsp. of contact lens solution.
4. Mix until mixture gets harder to mix and slime begins to form.
5. Take the slime out and begin kneading with both of your hands.
6. If needed, add ¼ tbsp. contact lens solution to make the slime less sticky. Set aside.
7. Repeat steps 1-6 for each of the remaining glitter glue colors.
8. Once all three slimes have been created, lay them on top of each other and begin to knead and twist and watch your slime turn into a galaxy! **Note:** If you knead too much, the slime will become one color.

**Adult supervision is required; This project is not appropriate for children under the age of 3 years. Always wash your hands before and after making and playing with slime. Warning: If large quantities of contact lens solution are accidentally ingested (greater than a tablespoon), get medical attention immediately.*

***Some contact solution brands work better than others, check out our Slime Tips section for all the details.*





Elmer's Recipe for Rainbow Slime using Elmer's Rainbow Slime Pack

supplies needed

- 3 X 6 fl oz Elmer's Glitter Glue (Blue, green and red)
- 3 X ½ tbsp. of baking soda
- 3 X 1¼ tbsp. of contact lens solution

instructions

1. Pour entire bottle of 6 fl oz Elmer's Blue Glitter Glue into the container.
2. Add ½ tbsp. of baking soda and mix thoroughly.
3. Add 1¼ tbsp. of contact lens solution.
4. Mix until mixture gets harder to mix and slime begins to form.
5. Take the slime out and begin kneading with both of your hands.
6. If needed, add ¼ tbsp. contact lens solution to make the slime less sticky. Set aside.
7. Repeat steps 1-6 for each of the remaining glitter glue colors.
8. Once all three slimes have been created, lay them on top of each other and begin to knead and twist and watch your slime turn into a galaxy! **Note:** If you knead too much, the slime will become one color.

**Adult supervision is required; This project is not appropriate for children under the age of 3 years. Always wash your hands before and after making and playing with slime. Warning: If large quantities of contact lens solution are accidentally ingested (greater than a tablespoon), get medical attention immediately.*

***Some contact solution brands work better than others, check out our Slime Tips section for all the details.*





Elmer's Witch Cauldron Recipe using Elmer's Halloween Slime Kit

supplies needed

- 1.9 fl oz Elmer's Magical Liquid (Included)
- 6 fl oz Elmer's Purple Glitter Glue (Included)
- 0.356 fl oz Elmer's Orange Glitter Glue Pen (Included)
- 0.356 fl oz Elmer's Dark Green Glitter Glue Pen (Included)
- 0.356 fl oz Elmer's Black Glitter Glue Pen (Included)

instructions

1. Pour entire bottle of 6 fl oz Elmer's Purple Glitter Glue into the container.
2. Add a pinch of Elmer's Orange Glitter Glue pen, and ½ of Elmer's Dark Green Glitter Glue pen and Elmer's Black Glitter Glue pen.
3. Add entire content of 1.9 fl oz Elmer's Magical Liquid, a little at a time, and mix into glue until fully blended. You will notice the mixture becoming harder to mix and slime begins to form.
4. Take the slime out and begin kneading with both of your hands.
5. Bring the brew to life by adding your choice of creatures and casting your own spells! Use the slime as decoration or house in a jar to create an everlasting witch potion.

**Adult supervision is required; This project is not appropriate for children under the age of 3 years. Always wash your hands before and after making and playing with slime. Warning: If large quantities of contact lens solution are accidentally ingested (greater than a tablespoon), get medical attention immediately.*





Elmer's Frankenstein Slime Recipe using Elmer's Halloween Slime Kit

supplies needed

- 1.9 fl oz Elmer's Magical Liquid (Included)
- 6 fl oz Elmer's Green Glitter Glue (Included)
- 0.356 fl oz Elmer's Orange Glitter Glue Pen (Included)
- 0.356 fl oz Elmer's Dark Green Glitter Glue Pen (Included)
- 0.356 fl oz Elmer's Black Glitter Glue Pen (Included)

instructions

1. Pour entire bottle of 6 fl oz Elmer's Green Glitter Glue into the container.
2. Add all 0.356 fl oz Elmer's Glitter Glue Pens into the container and mix.
3. Add entire content of one 1.9 fl oz Elmer's Magical Liquid , a little at a time, and mix into glue until fully blended. You will notice the mixture becoming harder to mix and slime begins to form.
4. Take the slime out and begin kneading with both of your hands.
5. Awaken your Frankenstein slime by adding googly eyes and other crafting materials!
6. Use the slime as decoration or house Frankenstein slime in a clear jar.

**Adult supervision is required; This project is not appropriate for children under the age of 3 years. Always wash your hands before and after making and playing with slime. Warning: If large quantities of contact lens solution are accidentally ingested (greater than a tablespoon), get medical attention immediately.*



Elmer's Monster Slime Recipe using Elmer's Halloween Slime Kit

supplies needed

- 1.9 fl oz Elmer's Magical Liquid (Included)
- 6 fl oz Elmer's Green Glitter Glue (Included)
- 0.356 fl oz Elmer's Orange Glitter Glue Pen (Included)
- 0.356 fl oz Elmer's Dark Green Glitter Glue Pen (Included)
- 0.356 fl oz Elmer's Black Glitter Glue Pen (Included)

instructions

1. Pour out one 6 fl oz Elmer's Green Glitter Glue equally into three separate containers.
2. Add all contents of the Elmer's Glitter Glue Pens to each separate container:
 - Container 1: Elmer's Black Glitter Glue Pen
 - Container 2: Elmer's Orange Glitter Glue Pen
 - Container 3: Elmer's Dark Green Glitter Glue Pen
3. Add equal parts of the Elmer's Magical Liquid, a little at a time, and mix into glue until fully blended. You will notice the mixture becoming harder to mix and slime begins to form.
4. Take each of the slime out, one at a time, and begin kneading with both of your hands until the desired slime consistency and set aside.
5. Once all 3 slimes have been created, layer the three slimes on top of each other and twist to make the spooky slime whirl around.

**Adult supervision is required; This project is not appropriate for children under the age of 3 years. Always wash your hands before and after making and playing with slime. Warning: If large quantities of contact lens solution are accidentally ingested (greater than a tablespoon), get medical attention immediately.*



Elmer's Frosty Slime Recipe using Elmer's Frosty Slime Kit

supplies needed

- 2.3 fl oz Elmer's Magical Liquid (Included)
- 5 fl oz Elmer's Clear School Glue (Included)
- 0.356 fl oz Elmer's Iridescent White Glitter Glue Pen (Included)
- 0.356 fl oz Elmer's Frosted Blue Glitter Glue Pen (Included)
- 0.356 fl oz Elmer's Silver Glitter Glue Pen (Included)

instructions

1. Pour entire bottle of 5 fl oz Elmer's Clear School Glue into the container.
2. Add all contents of 0.356 fl oz Elmer's Glitter Glue Pens into the container and mix.
3. Add entire content of one 2.3 fl oz Elmer's Magical Liquid, a little at a time, and mix into glue until fully blended. You will notice the mixture becoming harder to mix and slime begins to form.
4. Take the slime out and begin kneading with both of your hands.
5. Put into a jar to keep the never melting frozen slime fresh or watch it harden like ice when you leave it out!

**Adult supervision is required; This project is not appropriate for children under the age of 3 years. Always wash your hands before and after making and playing with slime. Warning: If large quantities of contact lens solution are accidentally ingested (greater than a tablespoon), get medical attention immediately.*

For more kid-friendly recipes visit www.elmers.com/slime





Elmer's Avalanche Slime Recipe using Elmer's Frosty Slime Kit

supplies needed

- 2.3 fl oz Elmer's Magical Liquid (Included)
- 5 fl oz Elmer's Clear School Glue (Included)
- 2 x 0.356 fl oz Elmer's Iridescent White Glitter Glue Pen (Included)
- 0.356 fl oz Elmer's Frosted Blue Glitter Glue Pen (Included)
- 0.356 fl oz Elmer's Silver Glitter Glue Pen (Included)

instructions

1. Pour out 5 fl oz Elmer's Clear School Glue equally into three separate containers.
2. Add all contents of the Elmer's Glitter Glue Pens to each separate container:
 - Container 1: Elmer's Iridescent White Glitter Glue Pens
 - Container 2: Elmer's Frosted Blue Glitter Glue Pen
 - Container 3: Elmer's Silver Glitter Glue Pen
3. Add equal parts of the Elmer's Magical Liquid, a little at a time, and mix into glue until fully blended. You will notice the mixture becoming harder to mix and slime begins to form.
4. Take each of the slime out, one at a time, and begin kneading with both of your hands until the desired slime consistency and set aside.
5. Once all 3 slimes have been created, layer the three slimes on top of each other and twist to make the spooky slime whirl around.

**Adult supervision is required; This project is not appropriate for children under the age of 3 years. Always wash your hands before and after making and playing with slime. Warning: If large quantities of contact lens solution are accidentally ingested (greater than a tablespoon), get medical attention immediately.*



Elmer's Snowman Slime Recipe using Elmer's Frosty Slime Kit

supplies needed

- 2.3 fl oz Elmer's Magical Liquid (Included)
- 5 fl oz Elmer's Clear School Glue (Included)
- 2 x 0.356 fl oz Elmer's Iridescent White Glitter Glue Pen (Included)
- ½ x 0.356 fl oz Elmer's Frosted Blue Glitter Glue Pen (Included)
- ½ x 0.356 fl oz Elmer's Silver Glitter Glue Pen (Included)
- Beads, stickers, or crafting materials to create a snowman's face

instructions

1. Pour out 5 fl oz Elmer's Clear School Glue equally into three separate containers.
2. Add both 0.356 fl oz of Elmer's Iridescent White Glitter Glue Pens into the container.
3. Add ½ of 0.356 fl oz Elmer's Silver Glitter Glue Pen and ½ of 0.356 fl oz Elmer's Frosted Blue Glitter Glue Pen into the container.
4. Add entire content of one 2.3 fl oz Elmer's Magical Liquid, a little at a time, and mix into glue until fully blended. You will notice the mixture becoming harder to mix and slime begins to form.
5. Take the slime out and begin kneading with both of your hands.
6. Give your snowman a face using beads, stickers and other crafting materials and watch your snowman come to life!

**Adult supervision is required; This project is not appropriate for children under the age of 3 years. Always wash your hands before and after making and playing with slime. Warning: If large quantities of contact lens solution are accidentally ingested (greater than a tablespoon), get medical attention immediately.*



Elmer's Recipe for New Year's Eve Slime

NEW

supplies needed

- 6 fl oz Elmer's Black Glitter Glue
- 6 fl oz Elmer's Gold Glitter Glue
- 1 tbsp. of baking soda
- 2½ tbsp. of contact lens solution

instructions

1. Pour out the entire contents of both 6 fl oz Elmer's Glitter Glues into the bowl.
2. Add 1 tbsp. of baking soda and mix thoroughly.
3. Add 2½ tbsp. of contact lens solution.
4. Mix until slime forms and it begins to get harder to mix.
5. Take the slime out and begin kneading with both of your hands.
6. If needed, add ¼ tbsp. contact lens solution to make the slime less sticky.

**Adult supervision is required; This project is not appropriate for children under the age of 3 years. Always wash your hands before and after making and playing with slime. Warning: If large quantities of contact lens solution are accidentally ingested (greater than a tablespoon), get medical attention immediately.*

***Some contact solution brands work better than others, check out our Slime Tips section for all the details.*





Elmer's Recipe for Valentine's Glitter Slime



supplies needed

6 fl oz Elmer's Pink, Red or Purple Glitter Glue

½ tbsp. of baking soda

1¼ tbsp. of contact lens solution

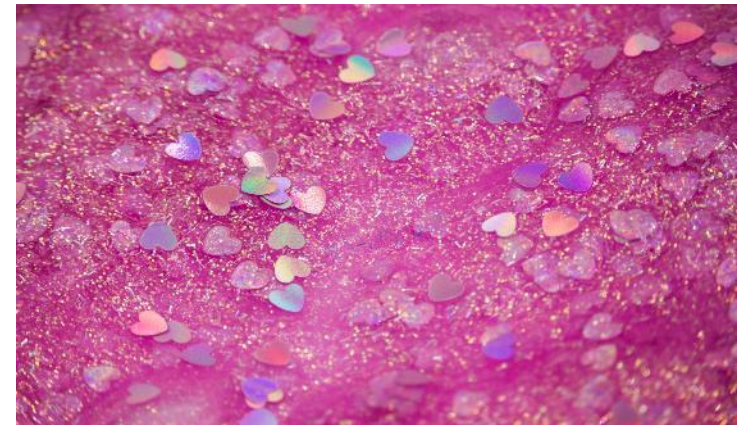
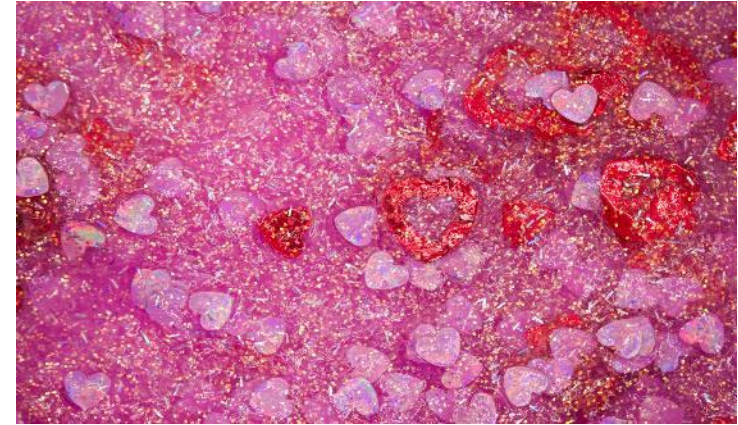
Heart confetti (optional)

instructions

1. Pour out the entire contents of 6 fl oz of Elmer's Glitter Glue into the bowl
2. Add ½ tbsp. of baking soda and mix thoroughly.
3. Add 1¼ tbsp. of contact lens solution.
4. Mix until slime forms and it begins to get harder to mix.
5. Take the slime out and begin kneading with both of your hands.
6. If needed, add ¼ tbsp. contact lens solution to make the slime less sticky.
7. Add you choice of heart confetti.

**Adult supervision is required; This project is not appropriate for children under the age of 3 years. Always wash your hands before and after making and playing with slime. Warning: If large quantities of contact lens solution are accidentally ingested (greater than a tablespoon), get medical attention immediately.*

***Some contact solution brands work better than others, check out our Slime Tips section for all the details.*





Elmer's Recipe for Orange Glitter Slime with Pink Foam Beads



supplies needed

6 fl oz Elmer's Orange Glitter Glue
½ tbsp. of baking soda
1¼ tbsp. of contact lens solution
Pink foam beads

instructions

1. Pour out the entire contents of 6 fl oz of Elmer's Glitter Glue into the bowl.
2. Add ½ tbsp. of baking soda and mix thoroughly.
3. Add 1¼ tbsp. of contact lens solution.
4. Mix until slime forms and it begins to get harder to mix.
5. Take the slime out and begin kneading with both of your hands.
6. If needed, add ¼ tbsp. contact lens solution to make the slime less sticky.
7. Mix desired amount of foam beads into slime.

**Adult supervision is required; This project is not appropriate for children under the age of 3 years. Always wash your hands before and after making and playing with slime. Warning: If large quantities of contact lens solution are accidentally ingested (greater than a tablespoon), get medical attention immediately.*

***Some contact solution brands work better than others, check out our Slime Tips section for all the details.*





Elmer's Recipe for Purple Glitter Slime with Multi-Colored Foam Beads

NEW

supplies needed

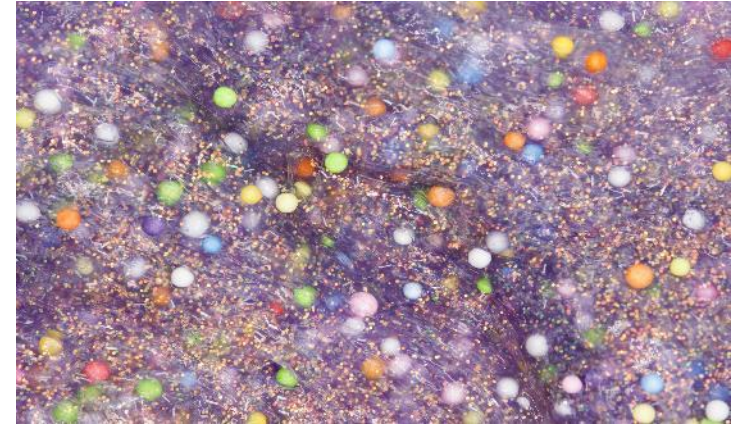
6 fl oz Elmer's Purple Glitter Glue
½ tbsp. of baking soda
1¼ tbsp. of contact lens solution
Multi-colored foam beads

instructions

1. Pour out the entire contents of 6 fl oz of Elmer's Glitter Glue into the bowl.
2. Add ½ tbsp. of baking soda and mix thoroughly.
3. Add 1¼ tbsp. of contact lens solution.
4. Mix until slime forms and it begins to get harder to mix.
5. Take the slime out and begin kneading with both of your hands.
6. If needed, add ¼ tbsp. contact lens solution to make the slime less sticky.
7. Mix desired amount of foam beads into slime.

**Adult supervision is required; This project is not appropriate for children under the age of 3 years. Always wash your hands before and after making and playing with slime. Warning: If large quantities of contact lens solution are accidentally ingested (greater than a tablespoon), get medical attention immediately.*

***Some contact solution brands work better than others, check out our Slime Tips section for all the details.*





Elmer's Recipe for Red & Blue Glitter Glue Foam Bead Slime

NEW

supplies needed

6 fl oz Elmer's Red Glitter Glue
6 fl oz Elmer's Blue Glitter Glue
½ tbsp. of baking soda
1¼ tbsp. of contact lens solution
Red and blue foam beads

instructions

1. Pour out the entire contents of 6 fl oz of Elmer's Glitter Glue into the bowl.
2. Add ½ tbsp. of baking soda and mix thoroughly.
3. Add 1¼ tbsp. of contact lens solution.
4. Mix until slime forms and it begins to get harder to mix.
5. Take the slime out and begin kneading with both of your hands.
6. If needed, add ¼ tbsp. contact lens solution to make the slime less sticky.
7. Mix desired amount of red foam beads into red glitter slime.
8. Repeat steps 1-8 for blue glitter slime.
9. Place red and blue slime side by side and swirl. **Note:** If you continue to twirl, the colors will eventually mix and become one.

**Adult supervision is required; This project is not appropriate for children under the age of 3 years. Always wash your hands before and after making and playing with slime. Warning: If large quantities of contact lens solution are accidentally ingested (greater than a tablespoon), get medical attention immediately.*

***Some contact solution brands work better than others, check out our Slime Tips section for all the details.*





Elmer's Recipe for Black Glitter Slime with Multi-Colored Foam Beads

NEW

supplies needed

6 fl oz Elmer's Black Glitter Glue
½ tbsp. of baking soda
1¼ tbsp. of contact lens solution
Multi-colored foam beads

instructions

1. Pour out the entire contents of 6 oz of Elmer's Glitter Glue into the bowl.
2. Add ½ tbsp. of baking soda and mix thoroughly.
3. Add 1¼ tbsp. of contact lens solution.
4. Mix until slime forms and it begins to get harder to mix.
5. Take the slime out and begin kneading with both of your hands.
6. If needed, add ¼ tbsp. contact lens solution to make the slime less sticky.
7. Mix desired amount of foam beads into slime.

**Adult supervision is required; This project is not appropriate for children under the age of 3 years. Always wash your hands before and after making and playing with slime. Warning: If large quantities of contact lens solution are accidentally ingested (greater than a tablespoon), get medical attention immediately.*

***Some contact solution brands work better than others, check out our Slime Tips section for all the details.*





Elmer's Recipe for Holiday Slime



supplies needed

6 fl oz Elmer's Red Glitter Glue

½ tbsp. baking soda

1¼ tbsp. contact lens solution

Holiday confetti and silver, gold, red and green glitter (optional)

instructions

1. Pour out the entire contents of 6 fl oz Elmer's Red Glitter Glue into a container.
2. Add ½ tbsp. of baking soda and mix thoroughly.
3. Add 1¼ tbsp. of contact lens solution.
4. Mix until slime forms and it begins to get harder to mix.
5. Take the slime out and begin kneading with both of your hands.
6. If needed, add ¼ tbsp. contact lens solution to make the slime less sticky.
7. If desired, add additional glitter and mix.

**Adult supervision is required; This project is not appropriate for children under the age of 3 years. Always wash your hands before and after making and playing with slime. Warning: If large quantities of contact lens solution are accidentally ingested (greater than a tablespoon), get medical attention immediately.*

***Some contact solution brands work better than others, check out our Slime Tips section for all the details.*





Elmer's Recipe for Thanksgiving Glitter Slime



supplies needed

6 fl oz Elmer's Gold Glitter Glue

½ tbsp. of baking soda

1¼ tbsp. of contact lens solution

Fall leaves confetti or any other fall themed confetti of choice

instructions

1. Pour out the entire contents of 6 fl oz of Elmer's Gold Glitter Glue into the bowl.
2. Add ½ tbsp. of baking soda and mix thoroughly.
3. Add 1¼ tbsp. of contact lens solution.
4. Mix until slime forms and it begins to get harder to mix.
5. Take the slime out and begin kneading with both of your hands.
6. If needed, add ¼ tbsp. contact lens solution to make the slime less sticky.
7. Mix in confetti into slime.

**Adult supervision is required; This project is not appropriate for children under the age of 3 years. Always wash your hands before and after making and playing with slime. Warning: If large quantities of contact lens solution are accidentally ingested (greater than a tablespoon), get medical attention immediately.*

***Some contact solution brands work better than others, check out our Slime Tips section for all the details.*





Elmer's Recipe for 4th of July Stars and Stripes Slime

supplies needed

2 x 5 fl oz Elmer's Clear School Glue
4 fl oz Elmer's White School Glue
baking soda
contact lens solution

instructions

For White Star slime:

1. Pour out one bottle of Elmer's White School Glue into a container.
2. Add ½ tbsp. of baking soda and mix thoroughly.
3. Add 1 tbsp. of contact lens solution.
4. Mix until mixture gets harder and slime begins to form.

For Red and Blue Star slime:

1. Pour out one bottle of Elmer's Clear School Glue into a container.
2. Add red food coloring and mix until desired color.
3. Add ½ tbsp. of baking soda and mix thoroughly.
4. Add 1 tbsp. of contact lens solution.
5. Mix until slime forms and it begins to get harder to mix.

Putting it all together:

Take all 3 star slimes (red, white and blue) and lay them next to each other. If desired twist and knead for a swirled effect.

Note: If you knead too much, the colors will eventually mix and become one.

Star Confetti
Blue and Red Food Coloring

5. Take the slime out and begin kneading with both of your hands.
 6. If needed, add ¼ tbsp. contact lens solution to make the slime less sticky.
 7. Add star confetti, mix. Set aside.
-
6. Take the slime out and begin kneading with both of your hands.
 7. If needed, add ¼ tbsp. contact lens solution to make the slime less sticky.
 8. Add star confetti, mix and knead. Set aside.
 9. Repeat steps 1-8 with blue food coloring to create blue slime.



**Adult supervision is required; This project is not appropriate for children under the age of 3 years. Always wash your hands before and after making and playing with slime. Warning: If large quantities of contact lens solution are accidentally ingested (greater than a tablespoon), get medical attention immediately.*

***Some contact solution brands work better than others, check out our Slime Tips section for all the details.*

For more kid-friendly recipes visit www.elmers.com/slime



Elmer's Recipe for Patriotic Slime

supplies needed

4 fl oz Elmer's White School Glue
6 fl oz Elmer's Blue Glitter Glue
6 fl oz Elmer's Red Glitter Glue

Baking soda
Contact lens solution
Gold glitter

instructions

For White Glitter Slime:

1. Pour out one bottle of Elmer's White School Glue into a container.
2. Add desired amount of gold glitter and mix.
3. Add ½ tbsp. of baking soda and mix thoroughly.
4. Add 1 tbsp. of contact lens solution.
5. Mix until slime forms and it begins to get harder to mix.
6. Take the slime out and begin kneading with both of your hands.
7. If needed, add ¼ tbsp. contact lens solution to make the slime less sticky. Set aside.

For Red and Blue Glitter slime:

1. Pour out one bottle of Elmer's Red Glitter Glue into a container.
2. Add ½ tbsp. of baking soda and mix thoroughly.
3. Add 1¼ tbsp. of contact lens solution.
4. Mix until slime forms and it begins to get harder to mix.
5. Take the slime out and begin kneading with both of your hands.
6. If needed, add ¼ tbsp. contact lens solution to make the slime less sticky. Set aside.
7. Repeat steps 1-6 with blue glitter glue to create blue glitter slime

Putting it all together:

Take all 3 slime (red, white and blue) and lay them next to each other. If desired twist, and knead for a swirled effect. **Note:** If you knead too much, the colors will eventually mix and become one

**Adult supervision is required; This project is not appropriate for children under the age of 3 years. Always wash your hands before and after making and playing with slime. Warning: If large quantities of contact lens solution are accidentally ingested (greater than a tablespoon), get medical attention immediately.*

***Some contact solution brands work better than others, check out our Slime Tips section for all the details.*

For more kid-friendly recipes visit www.elmers.com/slime





Grades: **4-8**

Gravity and Slime

Explore gravity with slime!



Supplies

- 5 fl. oz. Elmer's® Glow in the Dark Glue
- 6 fl. oz. Elmer's® Glitter Glue
- 5 fl. oz. Elmer's® Translucent Color Glue
- 3 bowls (one for each color of slime)
- ½ tbsp. baking soda for each slime
- Contact lens solution
- SciShow's YouTube video on gravitation.
- Kinetic Sand®

Kinetic Sand® is a registered trademark of Spin Master Ltd.

Journal Prompt

Which gravitation lessons did you learn about in your tests?

* Adult supervision is required; this project is not appropriate for children under the age of 3 years. Always wash your hands before and after making and playing with slime. Warning: If large quantities of contact lens solution are accidentally ingested (greater than a tablespoon), get medical attention immediately.

* Some contact solution brands work better than others. Check out the Slime Tips section at elmers.com/slime for details.

Instructions:

1. Pour each type of glue into a separate bowl.
2. Add ½ tbsp. of baking soda to each bowl and mix thoroughly. Add 1 tbsp. of contact lens solution to the bowl of slime using 5 fl. oz. glue and 1¼ tbsp. for slime using the 6 fl. oz. glue. Mix until solution gets thick and slime begins to form.
3. Take out slime and begin kneading them with both hands. If needed, add another ¼ tbsp. of contact lens solution to make slime less sticky.
4. Mix Kinetic Sand® into the slime made with translucent color glue.
5. Watch SciShow's YouTube video about gravitation with your class.
6. Are you ready to use slime to learn about gravitation? Work with your class to come up with some gravitation tests for your slime. Throw each kind of slime against a wall and see which one will reach the ground first. Toss the slime onto the ceiling and predict which one unsticks first. Hold out your slime to see which one drops to the ground first.
7. Once you're done with your testing, have your class get out their lab journals and answer the journal prompt in short-answer response.



Check out more fun ideas at elmers.com/slime



Grades: **3-7**

Volcanoes with Slime

Your students will love this hands-on lesson.



Supplies

- 6 fl. oz. Elmer's® Purple Glitter Glue
- 6 fl. oz. Elmer's® Red Glitter Glue
- ½ tbsp. baking soda for each color made
- 1¼ tbsp. contact lens solution for each color made
- 2 bowls (one for each color of slime)
- Mixing utensils
- Measuring spoons
- SciShow's YouTube video on volcanoes
- Brown Kinetic Sand®

Kinetic Sand® is a registered trademark of Spin Master Ltd.

Teacher Tip

Test how different mountain shapes create different lava flow patterns.

Instructions:

1. Show your students the SciSchow's YouTube video on volcanoes. Talk about all the different traits of volcanoes and lava flow.
2. Make volcanoes! Pour the entire bottle of Elmer's® Purple Glitter Glue into the bowl. Add ½ tbsp. of baking soda and mix thoroughly. Then add 1¼ tbsp. of contact lens solution and mix until slime begins to form. Do the same for the red color.
3. Take out the purple slime and begin kneading it with both hands. If needed, add ¼ tbsp. of contact lens solution to make the slime less sticky.
4. Add Kinetic Sand® until the slime is strong enough to hold its shape.
5. Mold your slime with sand into a mountain, then carefully form a crater in the top. Add the red slime to create a lava flow.



* Adult supervision is required; this project is not appropriate for children under the age of 3 years. Always wash your hands before and after making and playing with slime.
Warning: If large quantities of contact lens solution are accidentally ingested (greater than a tablespoon), get medical attention immediately.

* Some contact solution brands work better than others. Check out the Slime Tips section at elmers.com/slime for details.

Check out more fun ideas at elmers.com/slime